



S 551 COMPRESSED AIR ANALYSER

The S 551 is the ideal data logger for energy analysis (ISO 50001) and air audits (ISO 11011).

Features

Easy to use

- Just connect the sensor and start the recording, no configuration and programming required
- Easy operation through color-touch display

Flexible

- Connectable sensors for all required measurement tasks (air flow, air consumption, power consumption, pressure, temperature and many more)
- Up to 24 inputs through extension boxes and Modbus
- Several loggers can be combined: no need to have long cables from the sensor to the logger
- Third party sensors can be easily connected

Safe

- Power glitches and cuts won't affect performance: battery backup power

Efficient

- S 551 logs data on site
- Data is analyzed in the office
- Cost effective solution
- Full software package includes:
 - S4A for basic analyzes
 - CAA for compressed air audit analyzes

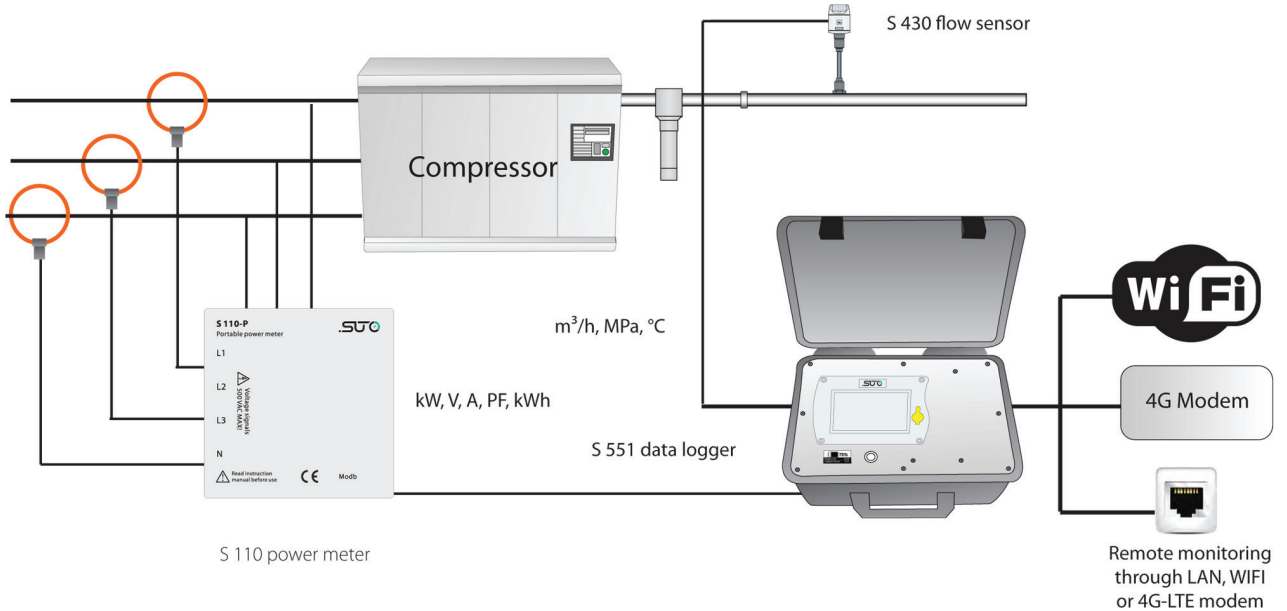


Includes SUTO Compressed
Air Analyzer Software

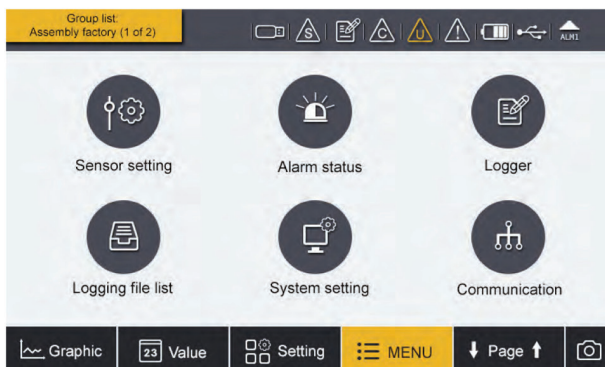
S 551 COMPRESSED AIR ANALYSER

Application

Measurement setup for data logging on the supply side



Touch screen operation



Up to 4 sensors can be viewed on one page and through page scrolling further sensors can be displayed.



The S 551 comes with a high resolution 5" colour touch screen interface making the operation as simple as possible.

SUTO intelligent sensors are detected automatically on power-up. With a few settings the data logger is ready for operations with virtually unlimited memory size.

Sensor list:			
Compressor Room 1 / Flow sensor		Compressor Room 2 / Dewpoint sensor	
Velocity	12.1 m/s	Temperature	23.6 C
Flow	25.1 m³/h	Humidity	12.4 %rh
Consumption	34991441 m³	Dewpoint	-32.1 Ctd
mA EXt		Pulse counter	
Vortex sensor flow 25.1 m³/h		Vortex sensor consumption 9999 m³	

Select which channels you want to view or analyze and the built in graphic analyzer will help you identify problems immediately.

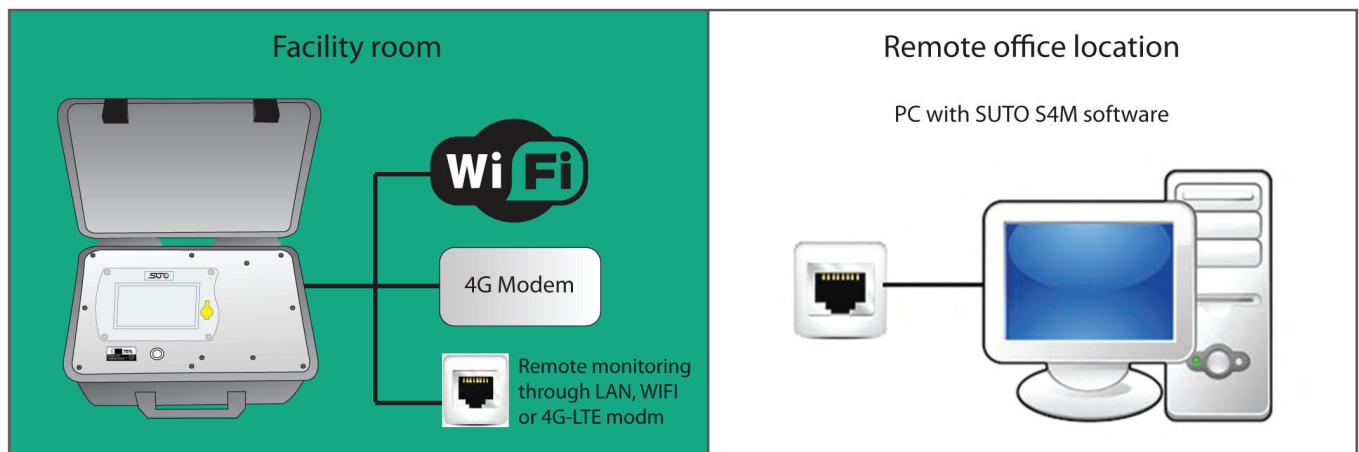
For detailed analysis we recommend using SUTO software S4A, CAA or S4M.

S 551 COMPRESSED AIR ANALYSER

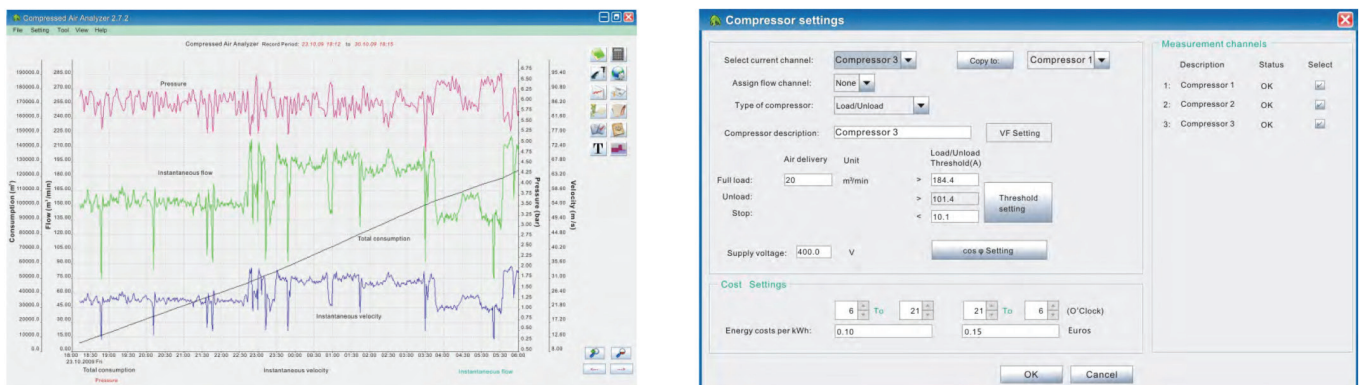


Touch screen operation

The S 551 is capable of sending measurement data and status information to a remote server through the internet. This allows users to monitor the system remotely. The illustration below shows the principle setup.



Data Analysis with the Compressed Air Analyzer



S 551 COMPRESSED AIR ANALYSER

Order information



Data logger

- | | |
|-----------|--|
| P560 5100 | S 551-P4, portable data recorder, 4 digital input channels, power cord, USB cable, S4A software, CAA software |
| P560 5101 | S 551-P6, portable data recorder, 4 digital input channels and 2 analog, power cord, USB cable, S4A software, CAA software |



Flow sensors

- | | |
|-----------|---|
| S601 0401 | S 401-M, insertion type flow sensor, DN15 ... DN300, Modbus RTU, 5 m cable with connector |
| S601 0430 | S 430 pitot tube flow sensor, DN25 ... DN250, 220 mm shaft, SDI, Modbus RTU, 5 m cable with connector |



Dew point sensor

- | | |
|-----------|--|
| S601 0215 | S 215 dew point sensor, -20°Ctd ... +50°Ctd, measuring chamber, 5 m cable with connector |
| S601 0212 | S 212 dew point sensor, -50°Ctd ... +20°Ctd, measuring chamber, 5 m cable with connector |
| S601 0220 | S 220 dew point sensor, -100°Ctd ... 0°Ctd, measuring chamber, 5 m cable with connector |



Pressure sensors

- | | |
|-----------|---|
| S694 1886 | Pressure sensor, 0 ... 1.6 MPa(g), 5 m cable with connector for S 551 |
| S694 0356 | Pressure sensor, 0 ... 4.0 MPa(g), 5 m cable with connector for S 551 |



Amp sensor

- | | |
|-----------|---|
| S554 0156 | SUTO current clamp sensor, 1000A, 100 mm diameter, including connector to S 551 |
| S554 0157 | SUTO current clamp sensor, 3000A, 150 mm diameter, including connector to S 551 |



Temperature sensor

- | | |
|-----------|--|
| S693 0005 | Temperature transmitter, -50° ... +200°C, 4 ... 20 mA loop powered, 6 x 150 mm sensor tube, 5 m cable with connector |
| A554 6003 | Compression fitting, 6 mm, G 1/2" thread, 0.6 MPa |
| A554 6004 | Compression fitting, 6 mm, G 1/2" thread, 1.6 MPa |



Power meter (for 3 phase and single phase measurement)

- | | |
|-----------|---|
| P554 0134 | Portable power meter S 110-P, Modbus RTU, including 4 test leads, 4 test clips, 5 m cable with connector to S 551 |
| S554 0160 | Rogowski coil for S 110-P, 1000 A, 100 mm diameter, 1.8 m cable, connector to S 110-P |
| S554 0161 | Rogowski coil for S 110-P, 3000 A, 150 mm diameter, 1.8 m cable, connector to S 110-P |
| S554 0162 | Rogowski coil for S 110-P, 100 A, 160 mm diameter, 1.8 m cable, connector to S 110-P |



Note: For 3 phases power supply 3 Rogowski coils are needed.

S 551 COMPRESSED AIR ANALYSER



Liquid flow meter (clamp on ultra sound)

P554 0070 Ultrasonic controller for liquid flow sensor, connectable to S 551, including 5 m connection cable to S 551 and to the sensors

S694 4603 Ultra sound sensor pair, DN32 ... DN100, socket terminals

S694 4604 Ultra sound sensor pair, DN100 ... DN700, socket terminals

S694 4605 Ultra sound sensor pair, DN300 ... DN6000, socket terminals



Other sensors / extensions

P554 0080 8 channel analog input extension, connectable to S 551, including 5 m cable with connector

A554 3314 Portable Modbus splitter box, with M12 connector



Accessories

A553 0103 Extension cable, 5 m, male-female connectors

A553 0110 Open wires cable, 5 m cable with connector

A553 0111 Sensor cable, M12, 5 m with connector to S 551

A554 0035 Transport case S 551 for sensors and cables, L560 x W450 x H160 mm (internal compartment can be arranged according to your individual sensor requirements)

A554 0036 Transport case, customized for 1 x S 110-P, 3 Rogowski coils, 4 x test leads, 4 x test clips, 1 x S 430



More information

To discuss how our compressed air energy management systems can assist in delivering real-time analytics and identify potential issues before they happen, contact our experienced team. We can demonstrate how you can cost effectively reduce energy wastage, increase productivity and significantly reduce operating costs.